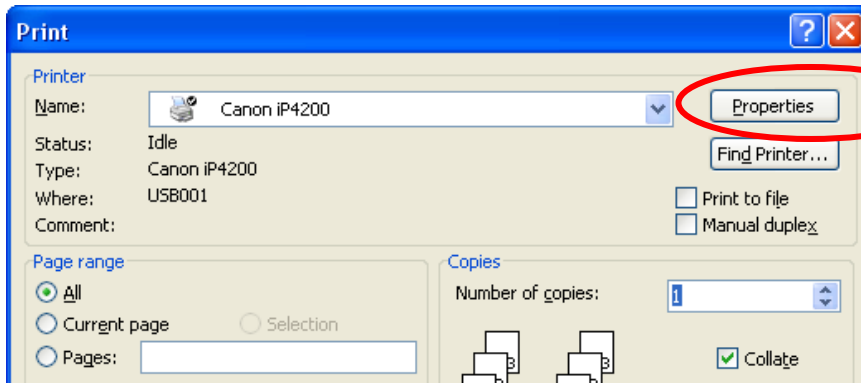
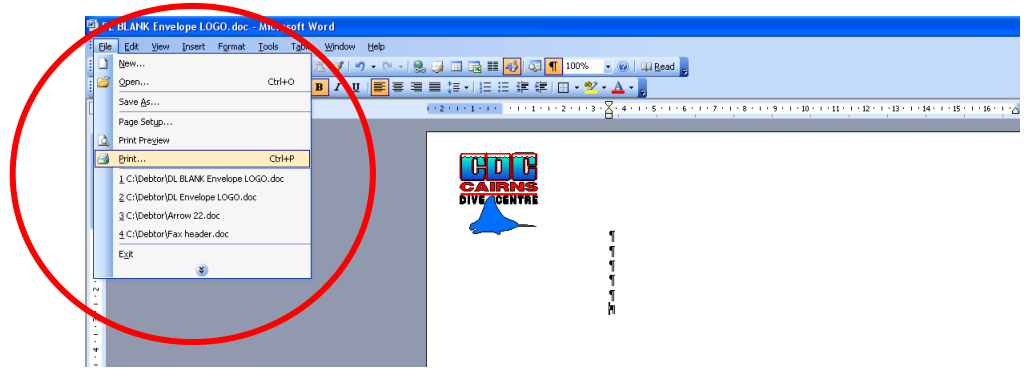
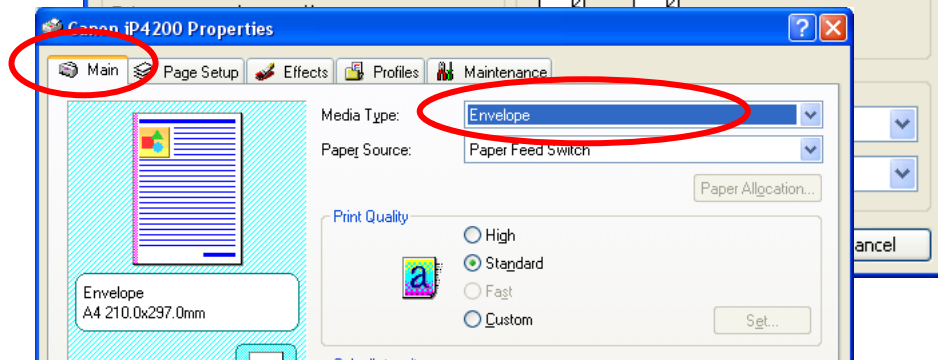


# How to Print a DL Envelope (for Canon Pixma IP4200)

1. Open your DL Envelope Document file in MSWord
2. Go to **File**
3. Select **Print**
4. You will see the following window pop up

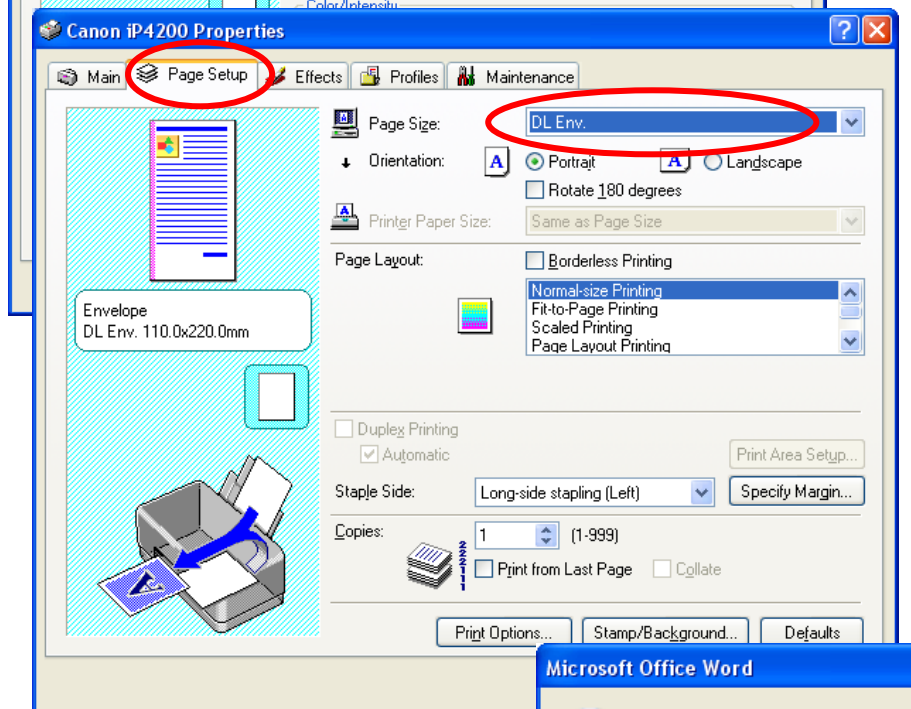


5. Click onto the **Properties** button to the right of this window.



6. Now make sure the **Main** tab is selected and change the Media Type to **Envelope**.

7. Then click onto the **Page Setup** tab



8. Change the Page Size to **DL Env.** (leave on **Portrait** setting)

9. Click the **OK** button

10. Then click **OK** button (again)

11. Finally, hit the **Yes** button below to print your envelope. You don't need to change any buttons on your computer.

